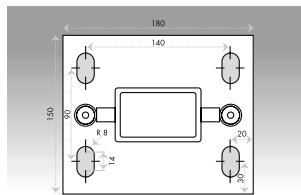


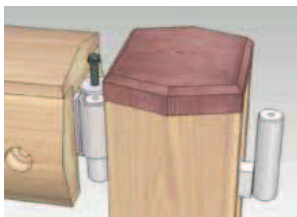
Pedestrian parapets

► Steel base details



Post steel base

► Locking system



"Panel to post" locking system

► Static loads

Pedestrian parapet on bridges - Test reports available upon request.

T100	T140	T100H
1 Uniform, normal & horizontal Tested q1 = 2740 N per M (XP98405: max 2500 N per M)	1 Uniform, normal & horizontal Tested q1 = 2140 N per M (XP98405: max 2500 N per M)	1 Uniform, normal & horizontal Tested q1 = 2400 N per M (XP98405: max 2500 N per M)
2 q2 uniform & vertical Tested q2 = 1000 N per M (XP98405: 1000 N per M)	2 q2 uniform & vertical Tested q2 = 1000 N per M (XP98405: 1000 N per M)	2 q2 uniform & vertical Tested q2 = 1000 N per M (XP98405: 1000 N per M)
3 q3 focused on any non vertical parapet component Tested q3 = 1000 N (XP98405: 1000 N per M)	3 q3 focused on any non vertical parapet component Tested q3 = 1000 N (XP98405: 1000 N per M)	3 q3 focused on any non vertical parapet component Tested q3 = 1000 N (XP98405: 1000 N per M)
Dynamic loads 4 Tested with: 50 Kg bag/alpha < 65° 0.5 Kg marble: L > 1.75 h Acceptable pavement width: 4.40 m and more	Dynamic loads 4 Tested with: 50 Kg bag/alpha < 65° 0.5 Kg marble: L > 1.75 h Acceptable pavement width: 3.28 m and more	Dynamic loads 4 Tested with: 50 Kg bag/alpha < 65° 0.5 Kg marble: L > 1.75 h Acceptable pavement width: 3.80 m and more

Important recommendations for installation:

When testing the system, each post has been anchored with 4 mechanical studs Ø 12-120 on concrete base of a compressive strength of 25 Mpa.

These specifications shall be considered as a minimum for the installation.

► Standards:

Tested according to the French standards XP P98-405.

Designed according to NF 01-012

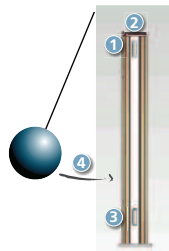
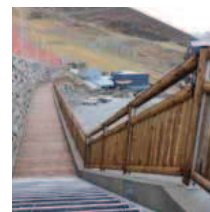
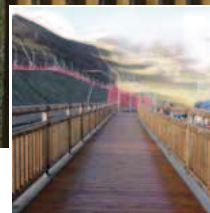


Photo: DTDL - Mayenne, L'Orléans - Immatriculé CARENTERO 021 22 27 16 - Max 203



T100 - T140 - T100H Pedestrian parapets

Tested pedestrian parapets

The mixed wood & steel solution

- Suitable product for curves and slopes
- Convenient solution for terminals ends
- Galvanized steel parts
- "Quick'n Easy" installation process
- Tested according to the French standard XP98-405

Pressure treated wood with chromium and arsenic free preservatives.



tertu
EQUIPEMENTS
routes et sites autour du monde

61160 Villedieu-lès-Bailleul
FRANCE

Tel: +33 2 33 36 11 02

Fax: +33 2 33 39 28 75

www.tertu.com

tertu
EQUIPEMENTS
routes et sites autour du monde

T100 Pedestrian parapet



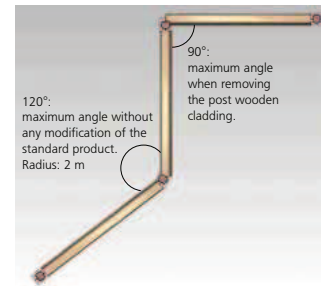
► Technical description

Galvanized steel post to be bolted, with wooden cladding.
Wooden panel with vertical barrels.
Connections "panel-post" with galvanized steel parts.
"Panel to post" locking system.

0.10 m ground clearance
2.00 m post spacing
0.10 m barrel spacing
1.03 m above ground height

Acceptable pavement width: 4.40 m and more

► Angles



T140 Pedestrian parapet



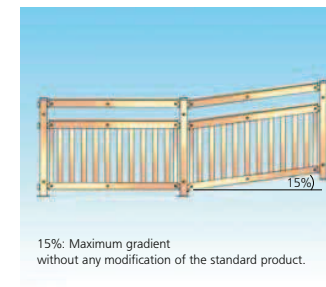
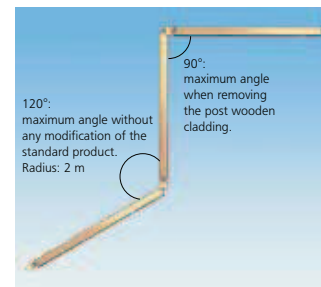
► Technical description

Galvanized steel post to be bolted, with wooden cladding.
Wooden panel with vertical barrels and handrail.
Connections "panel-post" with galvanized steel parts.
"Panel to post" locking system.

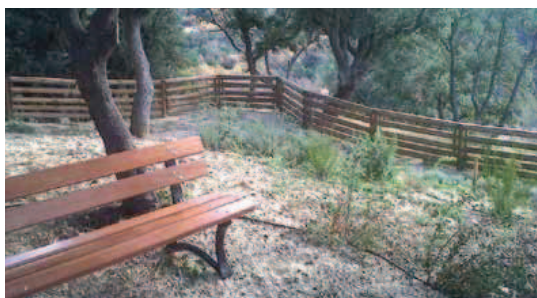
2.00 m post spacing
0.10 m ground clearance
0.10 m barrel spacing
1.40 m above ground height with barrels panel above ground height at 1.10 m.

Acceptable pavement width: 3.28 m and more

► Angles



T100H Pedestrian parapet



► Technical description

Galvanized steel post on steel base to be bolted, with wooden cladding. Wooden panel with horizontal beams. Connections "panel-post" with galvanized steel parts.

0.10 m ground clearance
2.00m post spacing
Beam-spacing: 45 mm between the 3 lower beams and 95 mm between the 2 upper beams.
1.03 m above ground height

Acceptable pavement width: 3.80 m and more

► Angles

